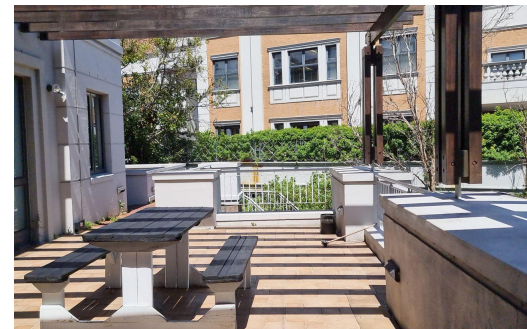
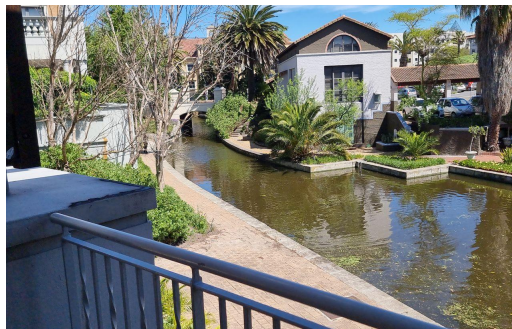
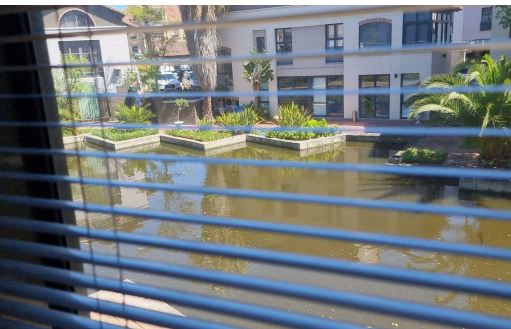




21

68



R160 per m²

1,818m² Office To Let in Century City



LAND SIZE 3,500m²
FLOOR SIZE 1,818m²
BUILDING HEIGHT 8m
TITLE Leasehold
ZONING Commercial

OPEN PARKINGS 21
BASEMENT PARKINGS 68



Gary Terblanche
 083 544 8574
gary@agrisell.co.za