
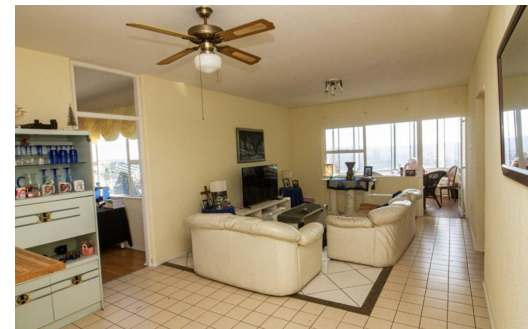
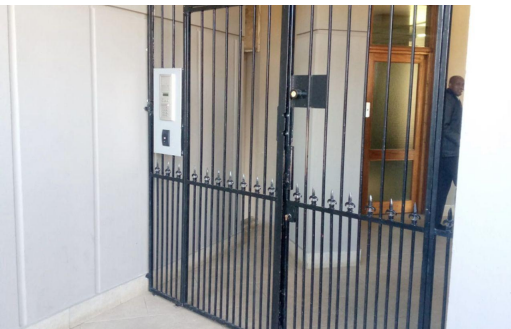




 3
 2
 -



R800,000

Apartment For Sale in Primrose Hill



FLOOR SIZE	146m ²	GARAGES	-
LAND SIZE	4,990m ²	PARKINGS	1
BEDROOMS	3	FLATLETS	-
BATHROOMS	2	DOMESTIC ACCOM.	-
KITCHENS	1		
LOUNGES	1		
DINING ROOMS	-		
STUDIES	-		

RATES R791 pm (Estimated)
LEVY R2,274 pm



Dolf Potgieter
 +27 (0)79 890 7249
 dolf@pomparealty.co.za