
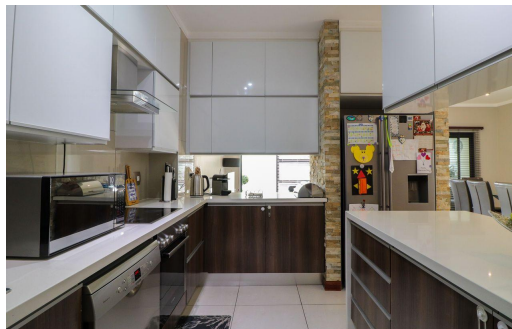



 3

 2.5

 2


R2,750,000

Townhouse For Sale in Morning Hill



FLOOR SIZE	192m ²	GARAGES	2
LAND SIZE	217m ²	CARPORTS	-
BEDROOMS	3	FLATLETS	-
BATHROOMS	2.5	DOMESTIC ACCOM.	-
KITCHENS	1	PETS ALLOWED	Yes
LOUNGES	1		
DINING ROOMS	1		
STUDIES	-		

RATES R1,850 pm (Estimated)
LEVY R2,770 pm



Michael Pompa
 072 239 3396
 bmgteam@pomparealty.co.za