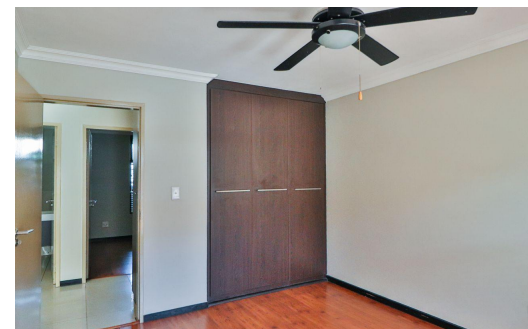
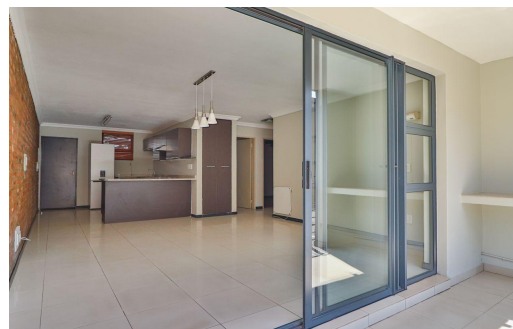
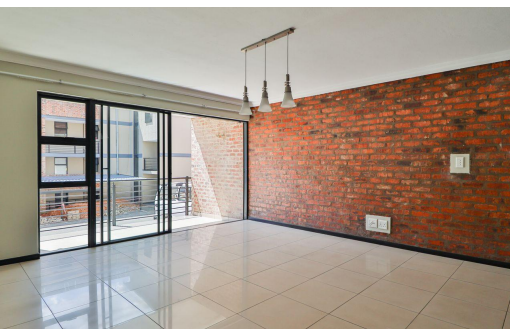




 2

 1

 -



R8,000 pm

Townhouse To Let in Solheim



| | | | |
|---------------------|---------------------|------------------------|-----|
| FLOOR SIZE | 80m ² | GARAGES | - |
| LAND SIZE | 4,000m ² | PARKINGS | 2 |
| BEDROOMS | 2 | FLATLETS | - |
| BATHROOMS | 1 | DOMESTIC ACCOM. | - |
| KITCHENS | 1 | POOL | Yes |
| LOUNGES | 1 | | |
| DINING ROOMS | - | | |
| STUDIES | - | | |



PRG Rental Team
066 544 2116
bmgmanagement@pomparealty.co.za