
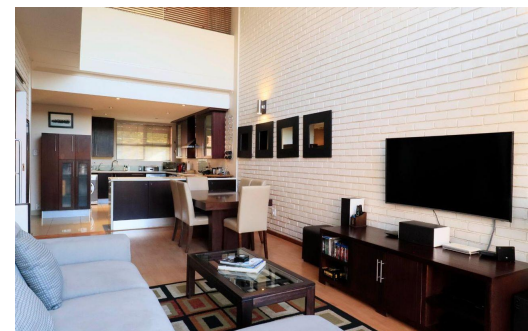
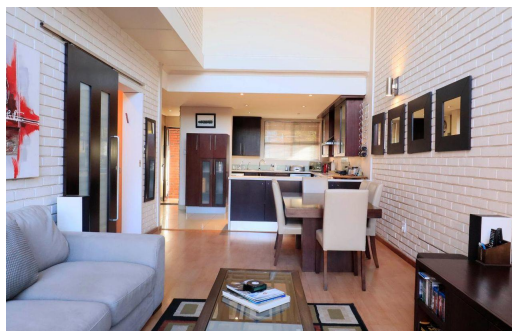


 3

 2.5

 -



R2,500,000

Apartment For Sale in Atholl



FLOOR SIZE	151m ²	GARAGES	-
LAND SIZE	-	PARKINGS	-
BEDROOMS	3	FLATLETS	-
BATHROOMS	2.5	DOMESTIC ACCOM.	-
KITCHENS	-	POOL	Yes
LOUNGES	2		
DINING ROOMS	-		
STUDIES	1		
FURNISHED	Yes		

RATES	R1,828 pm (Estimated)
LEVY	R3,973 pm



Charmaine Kirchmann
0834423887
charmainek@groundedproperty.co.za