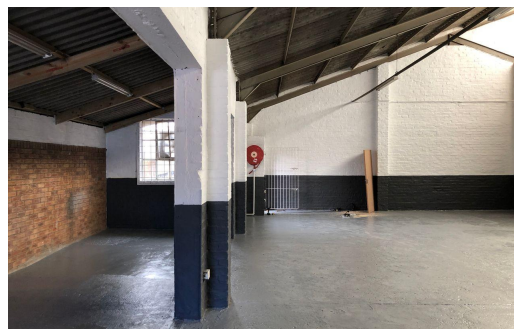
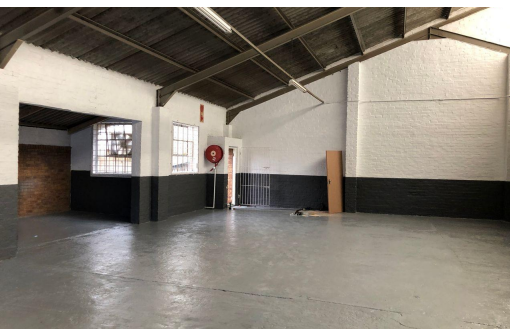




 3

 -



R23,100 pm

330m² Warehouse To Let in Montague Gardens

LAND SIZE	330m ²	OPEN PARKINGS	3
FLOOR SIZE	330m ²	POWER (3 PHASE)	Yes
ZONING	Industrial	POWER (AMPS)	60A
SECURITY	Yes		



Lyall Johnson
082 446 3362

lyall@annenber.co.za