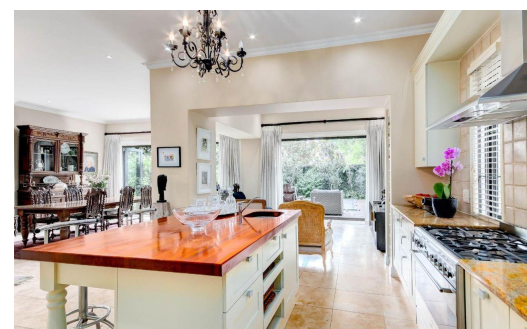
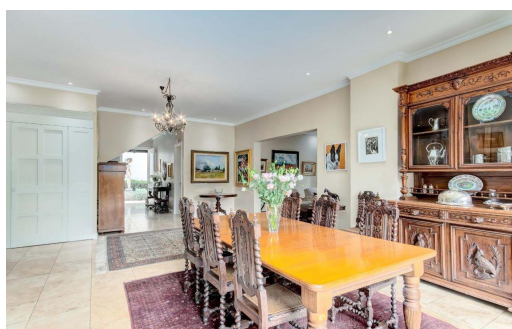
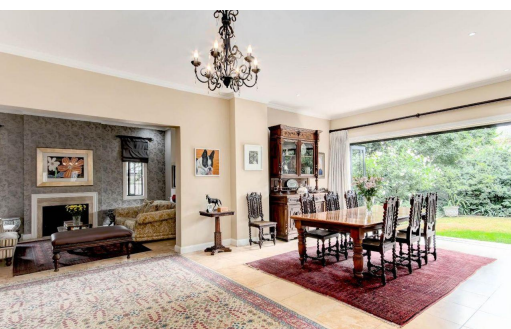


 4

 4.5

 2



R7,800,000

House For Sale in Hyde Park



FLOOR SIZE	300m ²	GARAGES	2
LAND SIZE	489m ²	PARKINGS	-
BEDROOMS	4	FLATLETS	-
BATHROOMS	4.5	DOMESTIC ACCOM.	-
KITCHENS	-		
LOUNGES	-		
DINING ROOMS	-		
STUDIES	-		

RATES R6,350 pm (Estimated)
LEVY R5,478 pm



Lorna Macala
027638424915
lorna@limestone.co.za