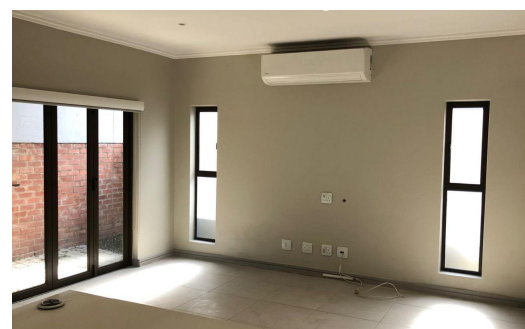
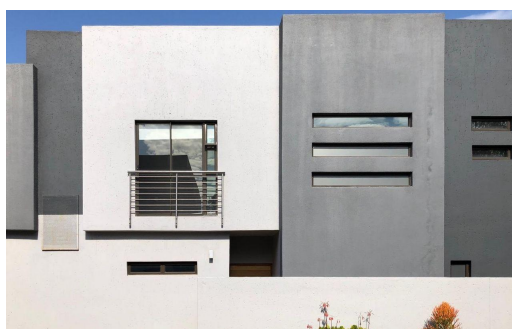




 3

 3.5

 2



# R2,750,000

## Townhouse For Sale in Petervale



|                     |                   |                        |     |
|---------------------|-------------------|------------------------|-----|
| <b>FLOOR SIZE</b>   | 205m <sup>2</sup> | <b>GARAGES</b>         | 2   |
| <b>LAND SIZE</b>    | 200m <sup>2</sup> | <b>PARKINGS</b>        | -   |
| <b>BEDROOMS</b>     | 3                 | <b>FLATLETS</b>        | -   |
| <b>BATHROOMS</b>    | 3.5               | <b>DOMESTIC ACCOM.</b> | -   |
| <b>KITCHENS</b>     | 1                 | <b>PETS ALLOWED</b>    | Yes |
| <b>LOUNGES</b>      | -                 |                        |     |
| <b>DINING ROOMS</b> | -                 |                        |     |
| <b>STUDIES</b>      | -                 |                        |     |

**RATES** R1,500 pm (Estimated)  
**LEVY** R2,500 pm



Norah Morekhure  
0824321517  
norah@limestone.co.za