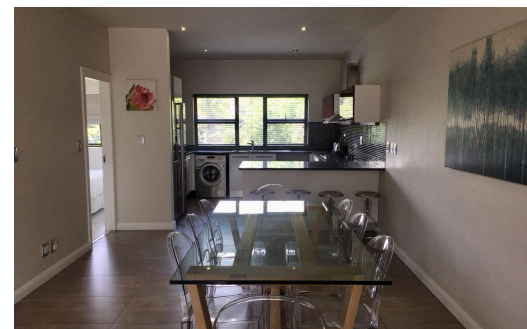




4

3.5

-



R33,000 pm

Apartment To Let in Sandown



FLOOR SIZE	185m ²	GARAGES	-
LAND SIZE	-	PARKINGS	2
BEDROOMS	4	FLATLETS	-
BATHROOMS	3.5	DOMESTIC ACCOM.	-
KITCHENS	1	POOL	Yes
LOUNGES	1		
DINING ROOMS	1		
STUDIES	1		
FURNISHED	Yes		



Yvonne Martin
Aguilar
+27 84 374 2274
yvonne@1strate.co.za