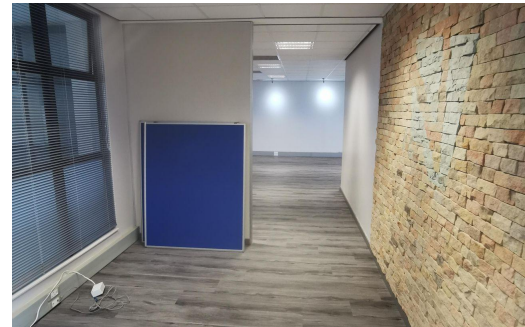




3

14



R9,975,000

350m² Building For Sale in Umhlanga Ridge

LAND SIZE 350m²
FLOOR SIZE 350m²
ZONING Commercial
SECURITY Yes
AIR CONDITIONING Yes

OPEN PARKINGS 3
BASEMENT PARKINGS 14



Philip Cooley
0711187145
phil.cooley@prop247.co.za