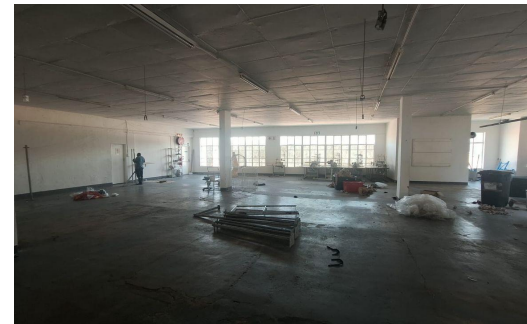
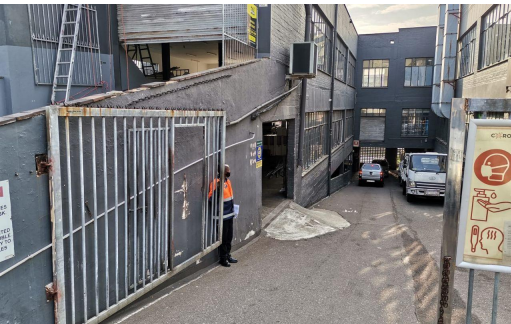


NEW LISTING



Floor Size
Zoning
Lease Period

718m²
Industrial
36 months

R35,900pm R50 per m²

718m2 Warehouse/factory to let in Park Hill

This secure 718m² factory/warehouse is available now for rental. The unit is a lower ground level unit offering 24-hour security, a roller shutter, natural light, approx..3.5m height, and 200 amps of power. There is a security contribution and one exclusive tandem parking with the other street parking's.

Phone Shaun for further details/viewings or any other industrial

Shaun Stobart

Non-Principal Property Practitioner
Registered with PPRA (FFC 1168413)

082 304 4969
shaun@maxprop.solutions



**MAX
PROP**

www.maxprop.co.za

WEB REF: CL2792