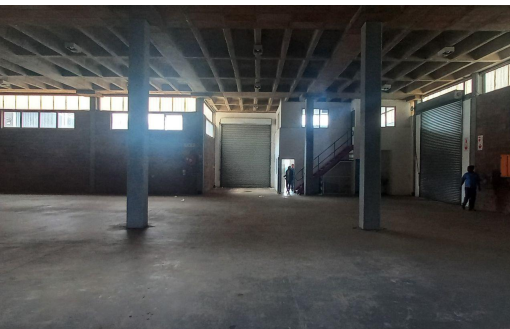
 2 5

# R78,514 pm

## 963m<sup>2</sup> Warehouse To Let in Westmead



**FLOOR SIZE** 963m<sup>2</sup>  
**BUILDING HEIGHT** 7m  
**ZONING** Industrial  
**SECURITY** Yes

**OPEN PARKINGS** 2  
**COVERED PARKINGS** 5  
**FLOOR LOAD CAPACITY** 4  
**POWER (3 PHASE)** Yes  
**POWER (AMPS)** 180A



Geoff Pereira  
+2771 699 6151

[geoff@maxprop.solutions](mailto:geoff@maxprop.solutions)