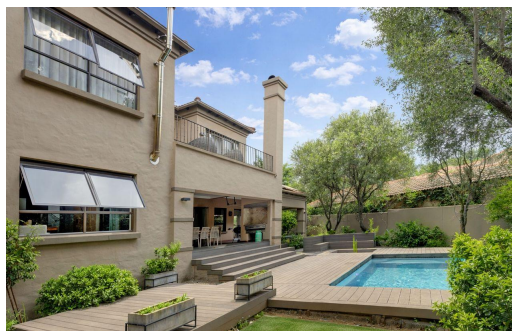
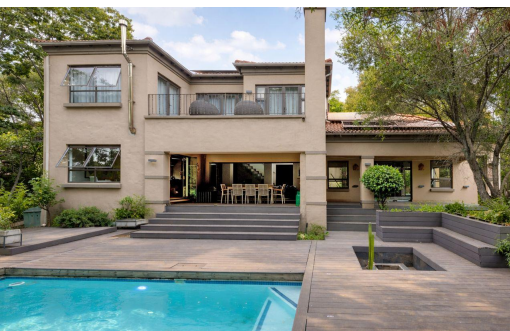


 3

 2

 2



R4,999,000

House For Sale in Beverley



FLOOR SIZE 345m²
LAND SIZE 810m²
BEDROOMS 3
BATHROOMS 2
KITCHENS 1
LOUNGES 1
DINING ROOMS 1

GARAGES 2
PARKINGS 2
DOMESTIC ACCOM. 1
POOL Yes
PETS ALLOWED Yes

RATES R2,727 pm (Estimated)
LEVY R4,565 pm



Sally Andrews
 0824513111

sallyandrews@vered.co.za