
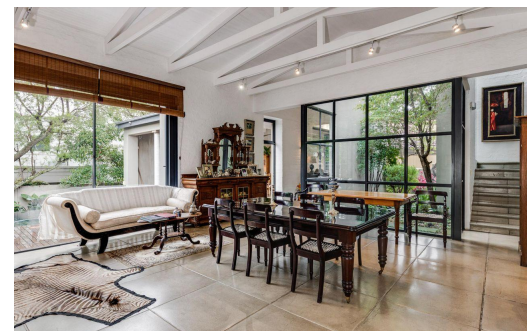
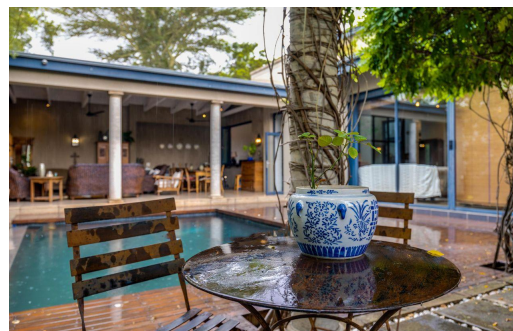

 3

 3.5

 2


R6,300,000

House For Sale in Dainfern Golf Estate



FLOOR SIZE	380m ²	GARAGES	2
LAND SIZE	807m ²	PARKINGS	4
BEDROOMS	3	FLATLETS	-
BATHROOMS	3.5	DOMESTIC ACCOM.	1
KITCHENS	1	POOL	Yes
LOUNGES	1	PETS ALLOWED	Yes
DINING ROOMS	1		
STUDIES	1		

RATES	R3,522 pm (Estimated)
LEVY	R4,290 pm



Janet Sapire
0833444065
janet@vered.co.za