
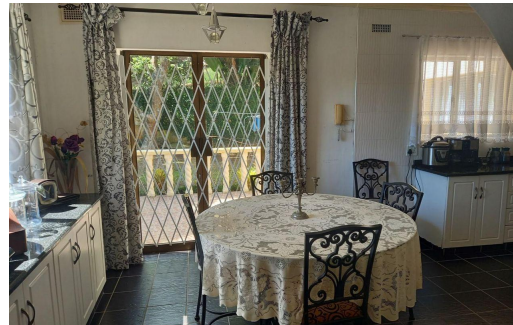




 3

 3.5

2



**R2,795,000**

**House For Sale in Blythedale**



<b>FLOOR SIZE</b>	270m <sup>2</sup>	<b>GARAGES</b>	2
<b>LAND SIZE</b>	929m <sup>2</sup>	<b>PARKINGS</b>	4
<b>BEDROOMS</b>	3	<b>FLATLETS</b>	1
<b>BATHROOMS</b>	3.5	<b>DOMESTIC ACCOM.</b>	-
<b>KITCHENS</b>	1	<b>PETS ALLOWED</b>	Yes
<b>LOUNGES</b>	2		
<b>DINING ROOMS</b>	1		
<b>STUDIES</b>	1		

**RATES** R1,500 pm (Estimated)



Deirdre Aveyard  
0837070680

[deirdrea@vered.co.za](mailto:deirdrea@vered.co.za)