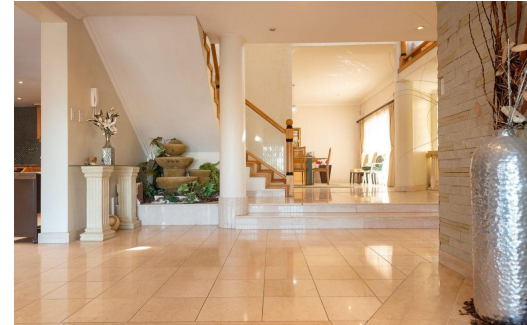




5

5

2



R6,650,000

House For Sale in Blythedale



FLOOR SIZE	550m ²	GARAGES	2
LAND SIZE	983m ²	PARKINGS	6
BEDROOMS	5	FLATLETS	-
BATHROOMS	5	DOMESTIC ACCOM.	1
KITCHENS	1	POOL	Yes
LOUNGES	2	PETS ALLOWED	Yes
DINING ROOMS	1		
STUDIES	-		

RATES R1,200 pm (Estimated)



Tracey Middleton
082 566 3364
traceym@vered.co.za