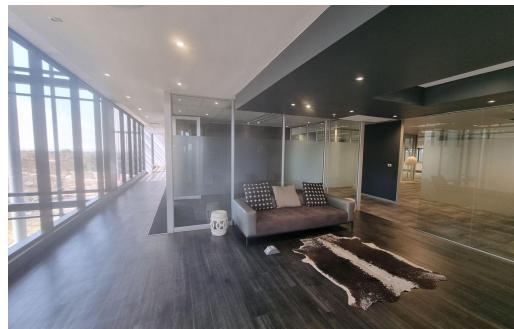




-

32



# R230 per m<sup>2</sup>

## 796m<sup>2</sup> Office To Let in Rosebank



**LAND SIZE** -  
**FLOOR SIZE** 796m<sup>2</sup>  
**ZONING** Commercial  
**SECURITY** Yes  
**AIR CONDITIONING** Yes

**BASEMENT PARKINGS** 32  
**POWER (3 PHASE)** Yes



Neil Stephen  
083 285 6871  
neil@cires.co.za