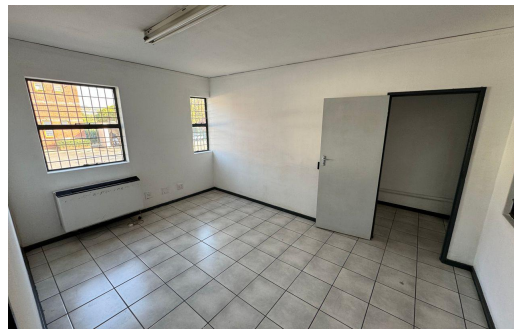




4

-



R1,995,500

307m² Warehouse For Sale in Strijdompark

LAND SIZE	307m ²	OPEN PARKINGS	4
FLOOR SIZE	307m ²	POWER (3 PHASE)	Yes
BUILDING HEIGHT	10m	POWER (AMPS)	63A
TITLE	Sectional Title		
ZONING	Industrial		
SECURITY	Yes		
AIR CONDITIONING	Yes		



Grant Race
082 513 3887
grant@cires.co.za