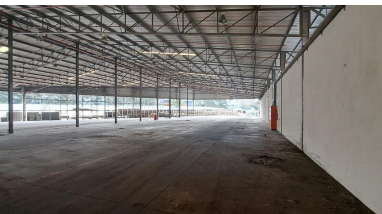




4,340m² Warehouse To Let in Pinetown Central



This warehouse facility is situated in a well managed, secure complex.
 * Multiple container truck access * Sprinklers throughout * 2000m paved yard * Offices & ablutions * 8m height * High visibility for signage * Close to central Pinetown & M19 LANDLORD TO ADD ROLLER DOORS AND MODIFY BUILDING TO SUIT TENANTS REQUIREMENTS

Gross Monthly Rental	Lease Period	Availability	Annual Escalation
-	Negotiable	Immediately	-
Zoning	Industrial	Power 3 Phase	Yes
Building Name	-	Security	Yes
Floor Size (m ²)	4,340m ²	Air Conditioning	No
Land Size (m ²)	-	Parking Bays	-



Dave Clements

0828819224
 dave@rasmussenproperties.co.za

Telephone 031 563 1567
 Email admin@rasmussenproperties.co.za

WEB REF IND2639



Whilst every effort has been made to ensure that the above information is accurate, Rasmussen Properties do not accept any responsibility for consequences resulting from any errors or omissions which may have occurred in compiling this information.