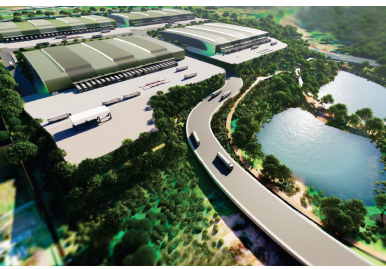




20,100m² Warehouse To Let in Hammarsdale



This Industrial Complex is currently being developed in Central Hammarsdale, consisting of 4 x 20,000m warehouses with large yard space. Specs to be built to tenants requirements 15 to 20m height Sprinklers throughout Paved yard space Multiple roller doors Multiple dock levelers A Grade Offices & ablutions Ample 3 phase power available Multiple interlink access Close to N3 Occupation late 2024/25

Gross Monthly Rental	Lease Period	Availability	Annual Escalation
-	60 months	Negotiable	-

Zoning	Industrial	Power 3 Phase	Yes
Building Name	-	Security	Yes
Floor Size (m ²)	20,100m ²	Air Conditioning	Yes
Land Size (m ²)	-	Parking Bays	-



Dave Clements

0828819224
dave@rasmussenproperties.co.za

Telephone 031 563 1567
Email admin@rasmussenproperties.co.za

WEB REF IND2606



Whilst every effort has been made to ensure that the above information is accurate, Rasmussen Properties do not accept any responsibility for consequences resulting from any errors or omissions which may have occurred in compiling this information.