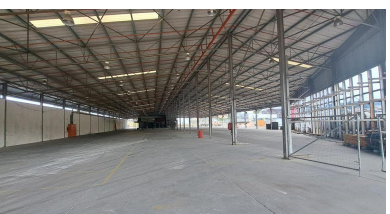


4,336m² Warehouse To Let in Pinetown Central



This warehouse has excellent visibility and faces a busy intersection near Central Pinetown. 6 to 8m height 310m offices and ablutions 3000m paved yard 600amps power 24/7 security guards Excellent space for signage Sprinklers throughout Multiple roller doors Close to M19 and M13 Multiple interlink access The Landlord will close off the open sides and add roller shutter doors

Gross Monthly Rental	Lease Period	Availability	Annual Escalation
-	Negotiable	Immediately	-

Zoning	Industrial	Power 3 Phase	Yes
Building Name	-	Security	Yes
Floor Size (m ²)	4,336m ²	Air Conditioning	Yes
Land Size (m ²)	-	Parking Bays	-



Dave Clements

0828819224
dave@rasmussenproperties.co.za

Telephone 031 563 1567
Email admin@rasmussenproperties.co.za

WEB REF IND2604

