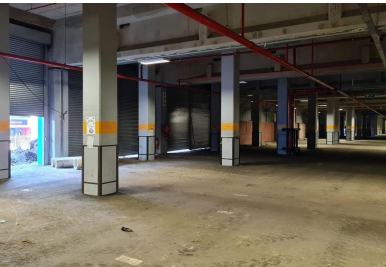


**14,000m<sup>2</sup> Warehouse To Let in Durban Central**



14000 square meter warehouse to rent in the Durban Station. Easy access to the Port. May suit vehicle storage and sales as well as bagged cargo. Contact me to view. Negotiable.

Gross Monthly Rental	Lease Period	Availability	Annual Escalation
-	36 months	Immediately	-

Zoning	Industrial	Power 3 Phase	Yes
Building Name	-	Security	No
Floor Size (m <sup>2</sup> )	14,000m <sup>2</sup>	Air Conditioning	No
Land Size (m <sup>2</sup> )	-	Parking Bays	-



**Michael Moss**

0737652832  
mikem@rasmussenproperties.co.za

Telephone 031 563 1567  
Email admin@rasmussenproperties.co.za

WEB REF IND2334

