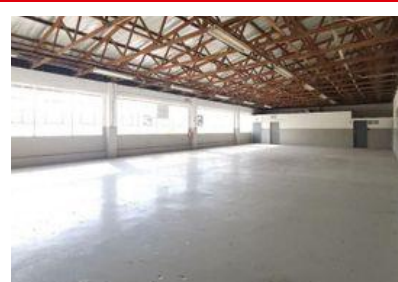
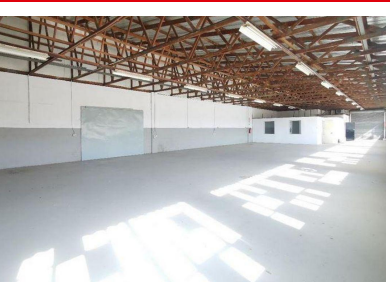




414m² Warehouse To Let in Westmead



Neat bright functional unit Excellent road frontage Close to N3 Street level Available February/March 2025 RENTAL NEGOTIABLE pending length of lease OCCUPATION DATE NEGOTIABLE. EARLIER OCCUPATION IS POSSIBLE

Gross Monthly Rental	Lease Period	Availability	Annual Escalation
-	Negotiable	Immediately	-

Zoning	Industrial	Power 3 Phase	Yes
Building Name	-	Security	No
Floor Size (m ²)	414m ²	Air Conditioning	No
Land Size (m ²)	-	Parking Bays	-



Dave Clements

0828819224
dave@rasmussenproperties.co.za

Telephone 031 563 1567
Email admin@rasmussenproperties.co.za

WEB REF IND1549



Whilst every effort has been made to ensure that the above information is accurate, Rasmussen Properties do not accept any responsibility for consequences resulting from any errors or omissions which may have occurred in compiling this information.