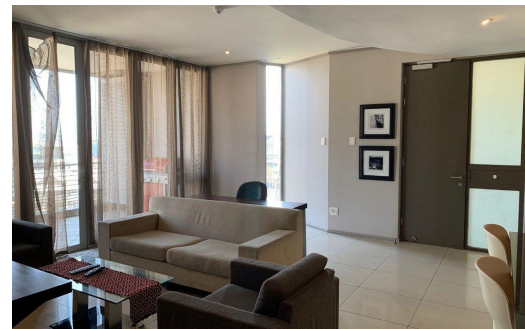
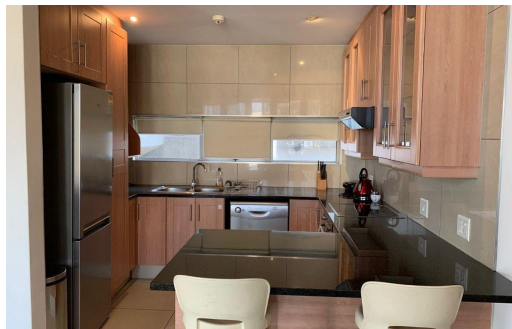
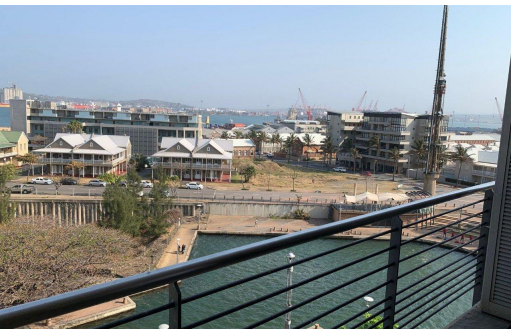



 2

 2

 -


# R2,095,000

## Apartment For Sale in Point Waterfront



<b>FLOOR SIZE</b>	130m <sup>2</sup>	<b>GARAGES</b>	-
<b>LAND SIZE</b>	-	<b>PARKINGS</b>	-
<b>BEDROOMS</b>	2	<b>FLATLETS</b>	-
<b>BATHROOMS</b>	2	<b>DOMESTIC ACCOM.</b>	-
<b>KITCHENS</b>	1		
<b>LOUNGES</b>	1		
<b>DINING ROOMS</b>	-		
<b>STUDIES</b>	-		

**RATES** R2,030 pm (Estimated)  
**LEVY** R3,981 pm



Craig Murphy  
 0798713838  
[craig@pwr.co.za](mailto:craig@pwr.co.za)