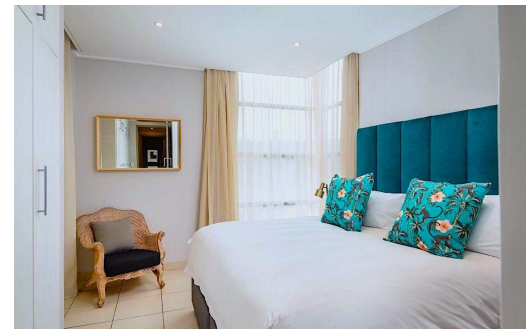




2
 2
 -



R2,200,000

Apartment For Sale in Point Waterfront



FLOOR SIZE	115m ²	GARAGES	-
LAND SIZE	-	PARKINGS	2
BEDROOMS	2	FLATLETS	-
BATHROOMS	2	DOMESTIC ACCOM.	-
KITCHENS	-	POOL	Yes
LOUNGES	1		
DINING ROOMS	1		
STUDIES	-		

RATES R1,500 pm (Estimated)
LEVY R3,200 pm



Craig Murphy
 0798713838
craig@pwr.co.za