



**R15,500 pm**

Northwold

### Features

Property Type	Freehold
ERF No	465
ERF Size	1,000m <sup>2</sup>
Property Title	Freehold
Bedrooms	4
Bathrooms	2
Lounge	1
Dining Room	1
Garage	1
Carports	1
Staff accommodation	No

Web Ref: GER545





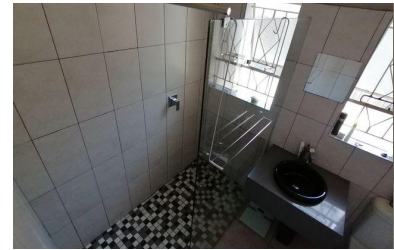
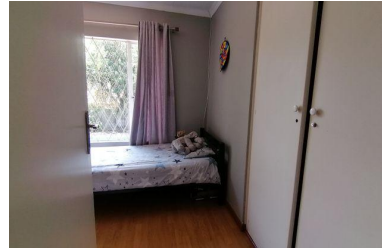
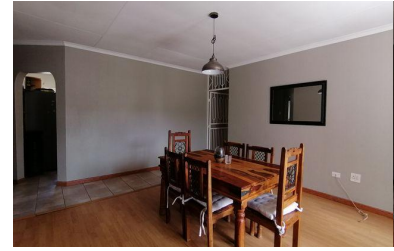
# SPACIOUS 4-BEDROOM HOUSE IN NORTHWOLD EXT 15

Discover your new home in the heart of Northwold Ext 15! This stunning free-standing house features four bedrooms, two bathrooms, and is tiled throughout for a clean, modern aesthetic that's easy to maintain. The spacious lounge and separate dining area are ideal for entertaining, while the study provides a quiet space for work or study. You'll enjoy a single garage for secure parking and additional space.

Step outside to your own private oasis, complete with a thatched lapa and built-in braai, perfect for outdoor entertaining around the sparkling lap pool.

This property is conveniently located near essential amenities, including filling stations such as Total, Shell, and Northgate service station. For healthcare needs, Drysdale Health Care Centre and Medicare Boskruin Medical Centre are just a short distance away. Shopping is a breeze with Northwold Junction Shopping Centre, Summerfields Shopping Centre, and Northgate nearby. Families will appreciate the proximity to educational institutions, including Little Ones Nursery School Sundowner, Footprints Pre-School, and Northwold Montessori.

Don't miss out on this fantastic opportunity!



**Melene Van Der Westhuizen**  
Property Practitioner

0828187359 / melene@gaylin.co.za



**Gaylin Estate Agents**  
341 Beyers Naude Drive

011 268 8000