

R475,000

Klippoortje

Features

Property Type	Townhouse
ERF Size	24,531m ²
Property Title	Sectional Title
Bedrooms	2
Bathrooms	1
Lounge	1
Carports	1
Staff accommodation	No

Web Ref: GER507

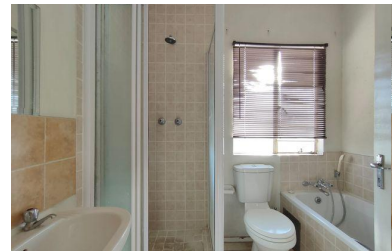


WE MAKE THE DIFFERENCE

FANTASTIC OPPORTUNITY FOR FIRST-TIME HOMEOWNERS &...

Fantastic opportunity for first-time homeowners & great investment! Park Square is a sought-after security complex where you will find a harmonious blend of comfort and modern living. This spacious two-bedroom home features a fully fitted kitchen perfect together with the open-plan lounge that leads out onto the balcony with stunning views and fresh air. The full bathroom comes with both a bathtub and shower...

Families will appreciate the dedicated kid's play area for little ones. The pool and clubhouse has built-in braai facilities. Close to all amenities with easy access to highways (N17 & N3) and main roads (R21 / M35) as well as the public transport route. This is a great environment to raise your children as there are a variety of public and private schools to choose from. Whether you're a young professional seeking a cozy home or an investor in search of a lucrative opportunity, this property caters to all your needs. Contact us for more info. Offers from R475K - asking price R525k



Eugene Naidoo

Candidate Property Practitioner

084 035 9553 / eugene@gaylin.co.za



Gaylin Estate Agents

341 Beyers Naude Drive

011 268 8000