

**R750,000**

Auckland Park

**Features**

<b>Property Type</b>	Apartment
<b>Bedrooms</b>	1
<b>Bathrooms</b>	1
<b>Lounge</b>	1
<b>Carpports</b>	2
<b>Staff accommodation</b>	No

Web Ref: GER462



## IDEAL APARTMENT FOR FIRST TIME BUYER OR INVESTORS

A spacious one Bedroom available for that first time buyer or an Investor for student accommodation

This apartment Offers:

Lovely first floor apartment, offering an open plan design

Suitable for a single professional or young couple, Ideal lock-up and go apartment

1 bedroom unit, fitted with built-in cupboards, full bathroom consisting of bath, shower, wc and basin

Kitchen has plenty of cupboard space, with granite tops and good quality stove

Open lounge/dining room and kitchen area. The lounge also opens up onto a balcony.

The complex is DSTV and fibre ready. The complex is centrally located and close to Wits, UJ and Mill Park Hospital

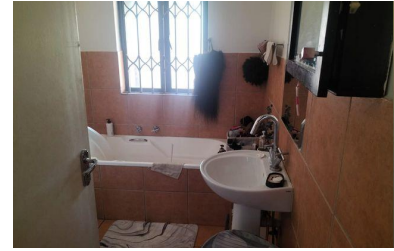
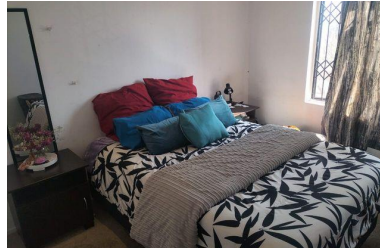
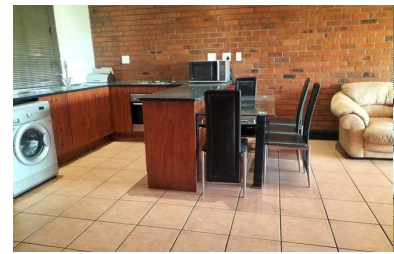
The complex has 24-hour access-controlled security, regular patrols ensure a secure environment for all residents

The complex also offers a Clubhouse with swimming pool,

Size of the Unit 60sqm

No need for parking issues, the unit comes with its own parking bay.

\*\*\*\*\*Contact me to schedule a viewing\*\*\*\*\*



**Gert Graaff**

Candidate Property Practitioner

084 406 6242 / gertg@gaylin.co.za



Gaylin Estate Agents

341 Beyers Naude Drive

011 268 8000