

R11,999 pm

Petervale

Features

Property Type	Apartment
ERF Size	59,644m ²
Property Title	Sectional Title
Bedrooms	2
Bathrooms	2
Lounge	1
Carports	2
Staff accommodation	No

Web Ref: GER421

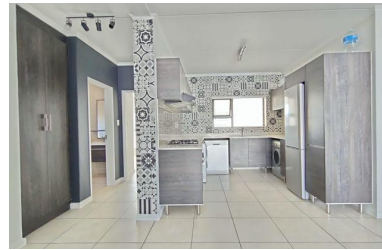
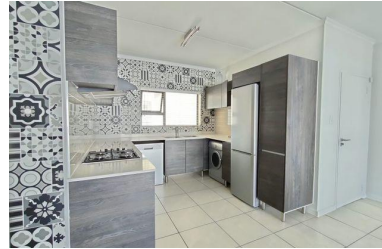
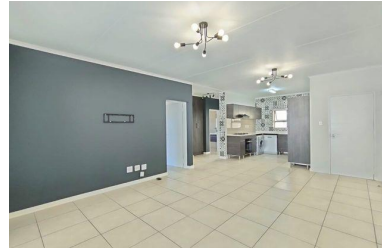
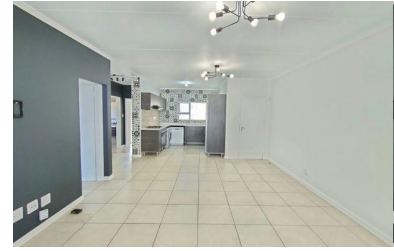


WE MAKE THE DIFFERENCE

MODERN LIVING WITH A PICTURESQUE VIEW FROM THE 2ND...

Step into a world of modern elegance with this spacious 2-bedroom, 2-bathroom gem located on the desirable second floor of a vibrant lifestyle complex. Perfectly designed for those who appreciate both comfort and style, this stunning home features sleek modern finishes. As you enter, you'll be greeted by an open-concept living area flooded with natural light, creating an inviting atmosphere that seamlessly flows into your gourmet kitchen (including appliances) ideal for entertaining friends and family. The generous layout offers ample space for relaxation and social gatherings, while an extra-large balcony beckons you to unwind with a lovely view, offering the perfect backdrop for your morning coffee or evening sunsets.

Enjoy the Lifestyle Centre with a variety of leisure and health facilities, entertainment, corporate facilities, and a delicious on-site restaurant. Rest easy with top-notch security features ensuring peace of mind for you and your loved ones. Convenience is at your fingertips! This remarkable property is situated in close proximity to an array of amenities, including trendy cafes, boutique shopping, and lush parks. Whether you're on the go or looking to unwind, everything you need is just moments away. Don't miss out on this rare opportunity to own a piece of paradise in a thriving community. Schedule your private tour today and experience the perfect blend of modern living and vibrant lifestyle!



Eugene Naidoo

Candidate Property Practitioner

084 035 9553 / eugene@gaylin.co.za



Gaylin Estate Agents

341 Beyers Naude Drive

011 268 8000