



R428,000

Eveleigh

Features

Property Type	Apartment
ERF Size	26,847m ²
Property Title	Sectional Title
Bedrooms	2
Bathrooms	1
Lounge	1
Carports	1
Staff accommodation	No
Rates	R366 p.m.

Web Ref: GER376

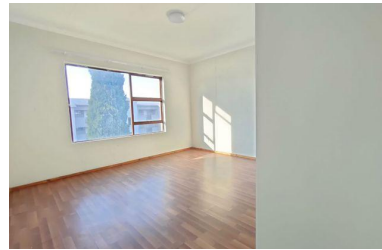


WE MAKE THE DIFFERENCE

FANTASTIC OPPORTUNITY FOR FIRST-TIME HOMEOWNERS &...

Eveleigh Estate is a sought-after security complex where you will find a harmonious blend of comfort and modern living. This spacious two-bedroom home features a fully fitted kitchen perfect together with the open-plan lounge that leads out onto the balcony with stunning views and fresh air. The full bathroom comes with both a bathtub and shower...

Families will appreciate the dedicated kid's play area and a separate pool for little ones. For those who enjoy a vibrant lifestyle, the East Rand Mall is just a stone's throw away and is ideal for all your shopping needs, with a variety of dining options nearby. It's simple to keep an active lifestyle for fitness because the well-known Virgin Active gym is nearby. Close to all amenities with easy access to highways (N12 / R21) and main roads as well as the public transport route. Whether you're a young couple seeking a cozy home or an investor in search of a lucrative opportunity, this property caters to all your needs. Contact us for more info. Offers from R428K - asking price R450k



Eugene Naidoo

Candidate Property Practitioner

084 035 9553 / eugene@gaylin.co.za



Gaylin Estate Agents

341 Beyers Naude Drive

011 268 8000