



**R9,000 pm**

Oakdene

### Features

Property Type	Townhouse
ERF Size	54,125m <sup>2</sup>
Property Title	Sectional Title
Bedrooms	2
Bathrooms	2
Lounge	1
Carports	2
Staff accommodation	No

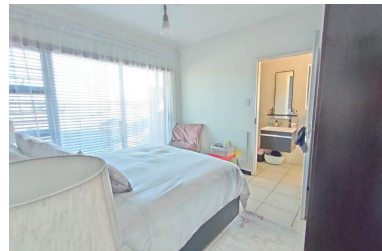
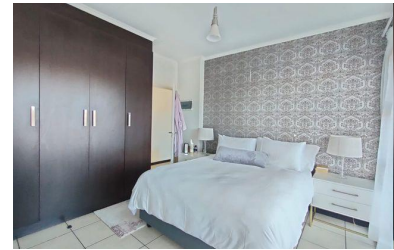
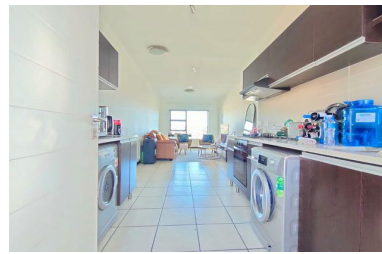
Web Ref: GER277



# MODERN LIVING @GLENVALE WITH SPECTACTULAR VIEW FROM...

Glenvale is conveniently located close to The Glen shopping centre in the Oakdene area. This lock-up and go unit is modern and has everything you need. There are excellent pre-school and private/ non-private junior and high schools in the area to choose from, easy access to main roads and highways and many other amenities within close proximity.

This first-floor unit (with balcony) has amazing vistas of the south of Joburg. It has an open plan lounge and dining room, the kitchen which comes with the following appliances: microwave, fridge, washing machine and tumble dryer with gas stove and Caesarstone tops. The 2 bedrooms are well-sized with loads of cupboard space. The balcony can be accessed from the lounge and main bedroom. The first bedroom is also spacious and includes built-in cupboards. The guest bathroom has a bath with a toilet and basin while the main bedroom is large with built-in cupboards and has an en-suite bathroom with a shower, toilet and basin. There is a clubhouse and pool, excellent security with friendly and professional staff to assist. The pedestrian access for tenants is via a biometric system. The complex has guards who patrol and the guardhouse security is 24/7. There are two covered parking and plenty of visitors parking's available. This safe secure unit has security gates and safety bars on the windows for additional protection. Contact me directly to book your viewing today



**Eugene Naidoo**

Candidate Property Practitioner

084 035 9553 / eugene@gaylin.co.za



Gaylin Estate Agents

341 Beyers Naude Drive

011 268 8000