



R895,000

Pimville Zone 4

Features

Property Type	Freestanding
ERF No	4217
ERF Size	390m ²
Property Title	Freehold
Bedrooms	3
Bathrooms	2
Lounge	1
Dining Room	1
Garage	1
Carpports	3
Staff accommodation	No
Rates	R400 p.m.

Web Ref: GER164



3 BEDROOMS, 2 BATHS, DINING, LOUNGE, SINGLE GARAGE,...

Step into the embrace of tranquil living with this stunning 3-bedroom, 2-bathroom property nestled amidst nature's splendor. Situated on a corner stand, this home offers a harmonious blend of comfort, style, and privacy, making it a haven for those seeking solace from the bustle of everyday life.

As you enter, you are greeted by a spacious lounge adorned with a cozy fireplace, perfect for unwinding on chilly evenings. Adjacent to the lounge is a large office/dining area, providing versatility to cater to your lifestyle needs.

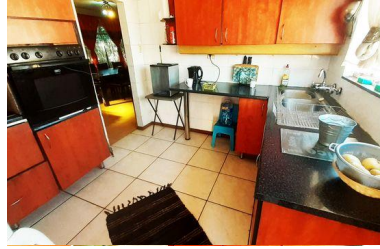
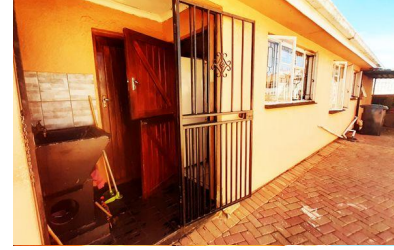
The well-appointed kitchen boasts modern amenities and ample storage space, while the adjacent laundry area and double wash basin add convenience to daily chores.

The master bedroom features an en-suite bathroom, offering a private retreat for relaxation. Two additional bedrooms provide ample space for family or guests, ensuring everyone's comfort.

Outside, the property is adorned with lush trees, creating a serene ambiance and ensuring privacy. A lockup single garage provides secure parking, while additional parking spaces including a single open parking and a double open parking cater to your needs.

A single-room cottage adds versatility to the property, whether it be for accommodating guests or for use as a studio or workspace.

Priced to sell at a reduced rate of R895,000, this property presents an exceptional opportunity to own a slice of tranquility at an unbeatable value. Don't miss out on this rare find – contact the agent urgently to arrange a viewing and embark on a journey towards your dream home today!



Seelan Moodley
Property Practitioner

0810413412 / seelan@gaylin.co.za



Gaylin Estate Agents
341 Beyers Naude Drive

011 268 8000