



R1,799,000

Windsor East

Features

Property Type	Townhouse
ERF No	1208
ERF Size	24,078m ²
Property Title	Sectional Title
Bedrooms	3
Bathrooms	2.5
Lounge	1
Dining Room	1
Garage	2
Staff accommodation	No
Rates	R841.73 p.m.

Web Ref: GER155



SECURE COMPLEX ON THE ROBIN HILLS BORDER

EXECUTIVES OR FAMILIES LOOKING FOR THE ULTIMATE LUXURIOUS CONTEMPORARY MULTI-LEVEL HOME IN A 24 HOUR SECURITY COMPLEX IN WINDSOR EAST, BORDERING ROBIN HILLS

Executives or families looking for the ultimate luxurious contemporary multi-level home, this home has it all. Superb position with spectacular panoramic views, large double volume entrance, open flowing spaces from the indoor reception rooms, open-plan to the outdoor living areas designed for entertainment and enjoyment. Covered patio and built-in-braai. This unique home set high on a hill in the heart of Randburg has uninterrupted views from Northcliff to Lanseria and the Magaliesburg Mountains. Not only the views which are unsurpassed, but the space that this residence offers is truly an absolute MUST to view.

ACCOMMODATION:

The Residence:

Inside Features - The Living Areas:

- * Security gate situated in front of the sturdy wooden door giving access to double volume open plan first floor
- * The dining as well as the living room both feature modern tiled flooring as well as two large windows that give an 180 degree view of both the North and South of Johannesburg
- * The covered patio area features a prime entertainment space as well as a built in braai
- * The kitchen features plenty cupboard space, a large breakfast nook, space for a 3/4 fridge, 4-plate electric stove and accompanying oven, large corner pantry, space for 3 appliances, a double sink, space for a microwave and an entrance to the garden area
- * A large linen cupboard
- * Guest bathroom featuring tiled flooring, a WC and a basin

Bedroom wing:

- * Large East facing (morning sunshine awaits you) window on the landing
- * Family bathroom features floor to ceiling tiles, a large bath, WC, basin with storage space, a large skylight and a spacious shower
- * First bedroom features carpeted flooring, built-in-cupboards in addition to the built in dressing table, a ceiling fan and a large window with breathtaking views
- * Second bedroom features carpeted flooring, built-in-cupboards also with a large window with breathtaking views
- * Main bedroom features carpeted floors, a ceiling fan, and a crystalline large window portraying the immaculate views
- * Main-en-suite comprises plenty of built in cupboard space in addition to the walk in cupboard, tiled flooring, double basin with extra storage space, large shower, WC and a spacious bath

Special Features:

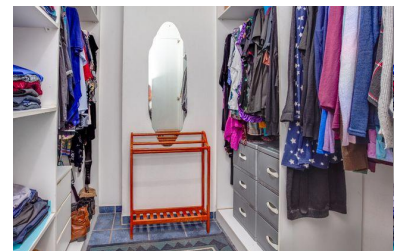
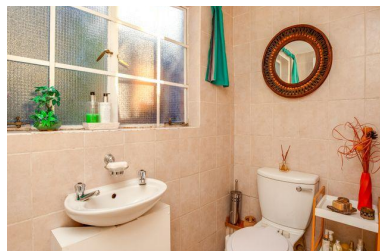
- * Direct access from the garage into enclosed garden
- * Enjoy the security and comfort of living in an extremely safe and well maintained complex complete with a communal gym and hiking paths through out entire complex with exquisite views
- * Built in braai
- * Pet friendly
- * Manicured garden
- * Double garage
- * Washing line

The Suburb of RobinHills:

This unique home is ideally situated near many schools, business hubs and main shopping centers. Homes in the suburb are pretty, with gardens filled with birds because of the high density of trees. Robin Hills is situated within the sought-after inner circle affording easy access to all major highways, shopping malls, good private and government schools, churches, medical and sporting facilities and other conveniently located amenities.

Schools:

- * The Kings School Robin Hills Private Pre-Primary, Primary and High School...



Carmen Weiss
Property Practitioner

0711858783 / carmen@gaylin.co.za



Gaylin Estate Agents
341 Beyers Naude Drive

011 268 8000