



R1,995,000

C Place

Features

Property Type	Apartment
ERF No	875
ERF Size	m ²
Property Title	Sectional Title
Bedrooms	2
Bathrooms	2.5
Lounge	2
Dining Room	1
Carports	1
Staff accommodation	No

Web Ref: 6269406



HURRY!! ONLY 8 SECTIONAL TITLE UNITS LEFT IN THE...

The ground floor plan consists of:

- Entrance hall
- 2 large bedrooms, the main bedroom (1 MES). The other bedroom has a shower and wash basin
- Guest toilet

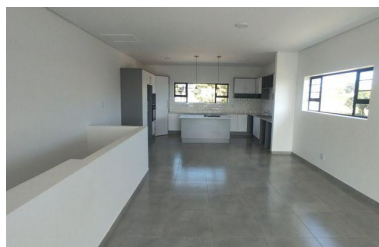
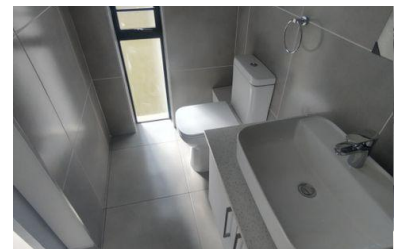
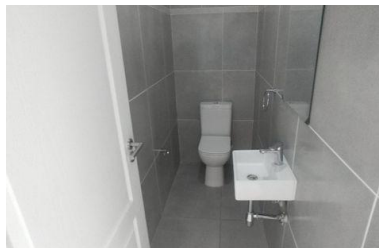
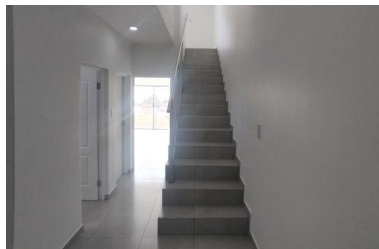
The top floor plan consists of:

- Spacious open plan kitchen, lounge and dining area
- Balcony with a built in stainless steel braai

FIG TREE Lifestyle Estate is situated in Jeffreys Bay in the Eastern Cape of South Africa. It is only a one-hour drive (89.5km) from the closest international airport in Gqeberha (Port Elizabeth). It is known by the locals as J-Bay and is renowned for being part of the Sunshine Coast of South Africa with its unique climate, beaches and surf waves. The summers are warm and the winters are mild, making water sports, hiking and fishing a popular choice for leisure, and counting it as one of South Africa's top destinations for coastal living.

This luxurious lifestyle estate is designed to suit a family or retirement lifestyle and provides a spacious and secure environment, with consideration to each home's privacy within the estate. The onsite facilities include recreational areas to be enjoyed by the estate residents.

Fig Tree Lifestyle Estate offers 24/7 access-controlled secure coastal living. The estate is located in the heart of town and is only a 5-minute walk from Jeffreys Bay's main Blue Flag beach. It boasts with a perfect location right next door to Jeffreys Bay Primary School and the Equinox Mall. It is close to all amenities with various shops, schools, restaurants, medical clinics, bowling club and golf course, and a brand new multi theatre hospital that is under construction.



Bertie Van Zyl
Candidate Property Practitioner

072 665 3755 / bertie@gaylin.co.za

