



R10,000 pm

Abbotsford

Features

Property Type	House
ERF No	10337
ERF Size	415m ²
Bedrooms	4
Bathrooms	2
Lounge	1
Dining Room	1
Garage	1
Staff accommodation	No

Web Ref: 6226988



WE MAKE THE DIFFERENCE

THE PERFECT PLACE FOR YOUR HAPPY HOME @EXT 11B

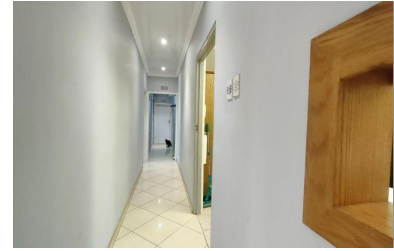
As you enter, you will appreciate the single-story layout, which enhances the ease of movement and functionality of the home. The open plan lounge and dining area create a warm and welcoming space, perfect for entertaining guests or spending quality time with family. Natural light fills the rooms, creating an inviting atmosphere throughout.

The separate kitchen is well-designed, offering plenty of cupboard space for all your storage needs. It provides adequate space for preparing delicious meals which features an electrical stove & gas hob for added convenience.

The four bedrooms are thoughtfully positioned to provide optimal privacy and tranquility. The main bedroom features an en-suite bathroom with ample cupboard space including a built-in dressing table. The other three bedrooms share a well-appointed bathroom & separate toilet, accommodating the needs of the household. Water & Sewage billed monthly according to usage and Electricity is Pre-paid.

One of the notable features of this property is the inclusion of the automated tandem garage for 2 vehicles /storage and the driveway which can accommodate another 4 vehicles. This versatile space adds value and is fully paved, making it low maintenance.

If this delightful property has piqued your interest, don't hesitate to call us for viewing arrangements. This is an excellent opportunity to acquire a cozy 4 bedroom face brick home in a partly gated community, offering a convenient and comfortable lifestyle for you and your family in EXT 11 B



Eugene Naidoo

Candidate Property Practitioner

084 035 9553 / eugene@gaylin.co.za



Gaylin Estate Agents

341 Beyers Naude Drive

011 268 8000