



**R1,495,000**

Discovery

### Features

Property Type	House
ERF No	68
ERF Size	809m <sup>2</sup>
Bedrooms	3
Bathrooms	2
Lounge	1
Dining Room	1
Garage	2
Carports	4
Staff accommodation	Yes
Rates	R455 p.m.

Web Ref: 5822151



**WE MAKE THE DIFFERENCE**

# STUNNING OLD WORLD CHARM 3 BEDROOMED HOME

Beautiful old world charmed home pressed ceilings wooden floors nice size garden. Fantastic home to get onto the property ladder 1st time home owners!

The front garden has been landscaped for privacy from the street, so no worries there!

Walk in through the sun room into the lounge with fireplace, and dining room. The large kitchen has so much space and lots of potential. 3 large bedrooms 1 main on suite, bedrooms are carpeted bathrooms are tiled.

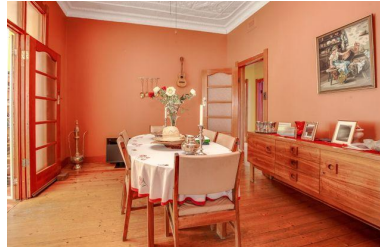
The garden boasts a lovely swimming pool with Lapa with built in braai and 3 large rooms outside one being used as a study, these could be turned into a cottage. There is enough parking for at least 6 cars securely

This home is close to Unisa and good transport links into Johannesburg and Roodepoort. shops close by

Both Government and private schools close by Gustav Preller Primary Victory House Discovery Clinic and Florida Clinic are also very close.

This is a must see house priced just right The potential is endless.

Discovery is a well established area with good shopping centers health centres and public parks.



**Michele Fenner**  
Agent

0637792544 / michelef@gaylin.co.za

**Gaylin Estate Agents**  
341 Beyers Naude Drive

011 268 8000