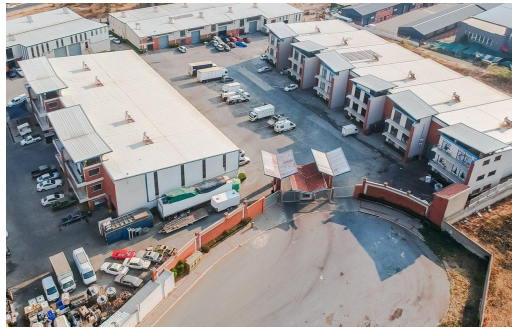




 6

 -



**R5,854,800**

**688m<sup>2</sup> Office For Sale in Halfway House**



**FLOOR SIZE**  
**ZONING**

688m<sup>2</sup>  
Commercial

**OPEN PARKINGS** 6  
**COVERED PARKINGS** -



Brian Muchichwa  
063 591 8102  
brian.muchichwa@century21.co.za