

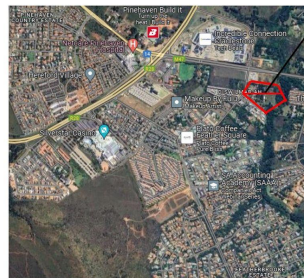


CRADLE STONE MALL NODE, KRUGERSDORP

FOCUS: New Residential Development



SITE
Holding 32 and Holding 33 Diswilmar AH
4.50 Ha vacant
Bulk water and sewer to village of properties surrounding
Mogale City indicated water supply capacity to be able to service the site
Site electricity supply located close by
Sales to be used commercially with a rental investment opportunity
Asking Price: R24,590,000 (approx. \$550M) excl VAT transfer duty, reg.
**Purchaser's engineers to investigate and confirm in terms of zoning



SITE
Holding 32 and Holding 33 Diswilmar AH
4.50 Ha

AMENITIES

EDUCATION

- Curro High School - 7.5km
- Indaba's School - 9.8km
- Krugersdorp High School - 8.6km
- Koning Mankwani International - 8.8km
- Anglo-Mogalese International - 10.2km
- Galesburg Primary School - 10.2km
- Mutsaers Primary School - 10.2km
- Galesburg Primary - 10.2km
- Shadok Krugersdorp (distance warning higher education central and distribution network...)

MEDICAL

- Helstone Pharmacy - 1.8km
- Life Wapenvoer - 12.2km
- Helstone Krugersdorp - 10.2km
- De Roo - 15.8km

SHOPPING & ENTERTAINMENT

- Cradlestone Mall - 350m
- Feather Square Centre - 600m
- Silver Star Casino - 1.5km
- Cradlestone Mall - 10.2km

TRAFFIC

- N14 - 900m via Hendrik Potgieter
- N1 - 12.8km via Hendrik Potgieter



R24,590,000

4.50Ha Vacant Land For Sale in Diswilmar AH

LAND SIZE 4.50Ha
ZONING Mixed Use



Brian Van Rensburg
0836111538
brian@renprop.co.za