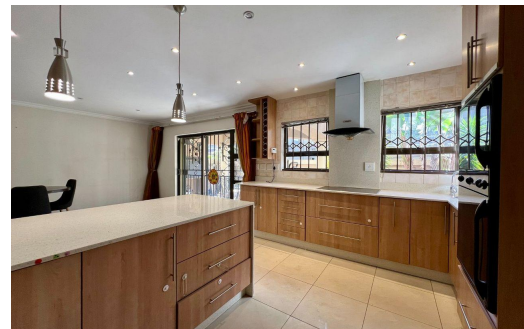
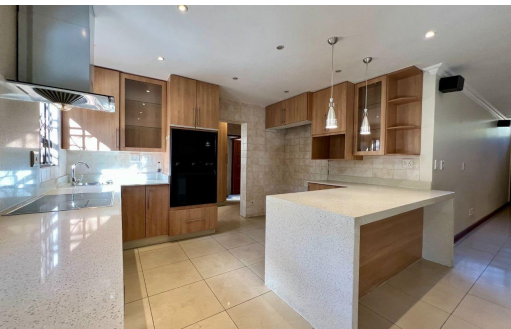


3  
 2.5  
 2



# R2,489,000

## House For Sale in Elma Park



<b>FLOOR SIZE</b>	-	<b>GARAGES</b>	2
<b>LAND SIZE</b>	322m <sup>2</sup>	<b>PARKINGS</b>	-
<b>BEDROOMS</b>	3	<b>FLATLETS</b>	-
<b>BATHROOMS</b>	2.5	<b>DOMESTIC ACCOM.</b>	-
<b>KITCHENS</b>	1	<b>PETS ALLOWED</b>	Yes
<b>LOUNGES</b>	1		
<b>DINING ROOMS</b>	1		
<b>STUDIES</b>	-		

**RATES** R2,938 pm (Estimated)  
**LEVY** R1,940 pm



Craig Luke  
 072 319 3416  
 cluke@kingstons.co.za