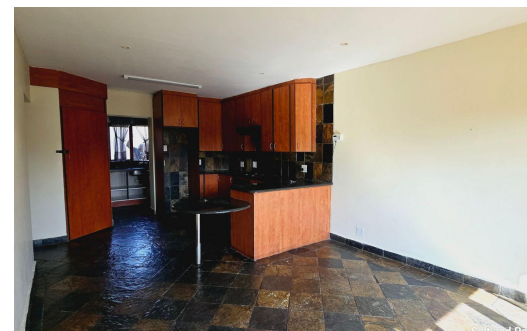
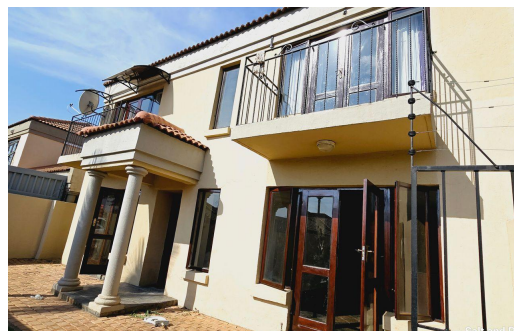




3

2.5

2



**R13,500 pm**

**Townhouse To Let in Montana Park**



**LAND SIZE** 367m<sup>2</sup>  
**BEDROOMS** 3  
**BATHROOMS** 2.5  
**KITCHENS** 1  
**LOUNGES** 1  
**DINING ROOMS** 1  
**STUDIES** -

**GARAGES** 2  
**PARKINGS** 2  
**FLATLETS** -  
**DOMESTIC ACCOM.** -



Michelle Nel  
 082 846 9840  
 michelle@saltandpepperhomes.co.za