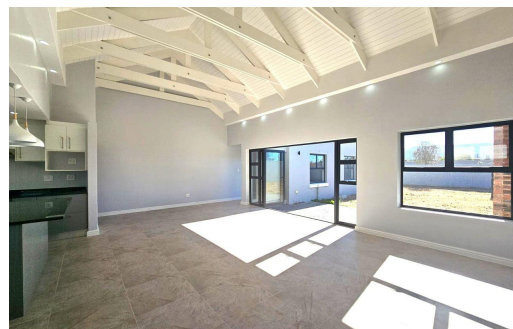




 3

 2

 2



R3,450,000

House For Sale in Paarl South



| | | | |
|---------------------|-------------------|------------------------|-----|
| FLOOR SIZE | 180m ² | GARAGES | 2 |
| LAND SIZE | 630m ² | PARKINGS | 2 |
| BEDROOMS | 3 | FLATLETS | - |
| BATHROOMS | 2 | DOMESTIC ACCOM. | - |
| KITCHENS | 1 | PETS ALLOWED | Yes |
| LOUNGES | 1 | | |
| DINING ROOMS | 1 | | |
| STUDIES | - | | |

RATES R2,600 pm (Estimated)
LEVY R2,030 pm



Barbara Strydom
083 340 3162
barbara.strydom@cch.co.za