
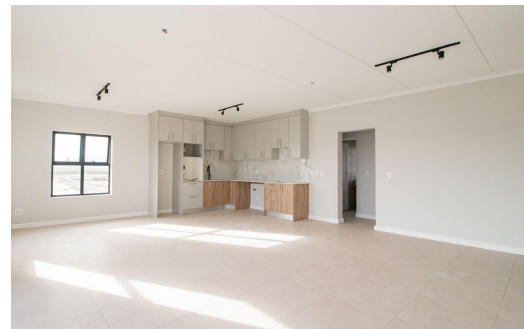
 3  
 2  
 -



# R19,995 pm

## Apartment To Let in Sandown



<b>FLOOR SIZE</b>	118m <sup>2</sup>	<b>GARAGES</b>	-
<b>LAND SIZE</b>	118m <sup>2</sup>	<b>PARKINGS</b>	1
<b>BEDROOMS</b>	3	<b>FLATLETS</b>	-
<b>BATHROOMS</b>	2	<b>DOMESTIC ACCOM.</b>	-
<b>KITCHENS</b>	1		
<b>LOUNGES</b>	1		
<b>DINING ROOMS</b>	1		
<b>STUDIES</b>	-		



Danny Abreu  
0822284615  
danny@lencar.co.za