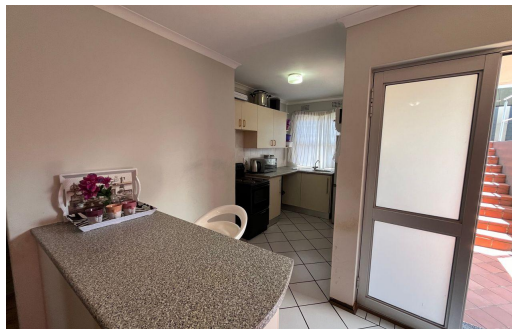




2  
 1  
 -



# R930,000

## Townhouse For Sale in Selborne



<b>FLOOR SIZE</b>	69m <sup>2</sup>	<b>GARAGES</b>	-
<b>BEDROOMS</b>	2	<b>PARKINGS</b>	1
<b>BATHROOMS</b>	1	<b>FLATLETS</b>	-
<b>KITCHENS</b>	1	<b>DOMESTIC ACCOM.</b>	-
<b>LOUNGES</b>	1	<b>POOL</b>	Yes
<b>DINING ROOMS</b>	1		
<b>STUDIES</b>	-		

**RATES** R963 pm (Estimated)  
**LEVY** R1,309 pm



Hayley Wyer  
 0834483415  
 hayley@investpro.co.za