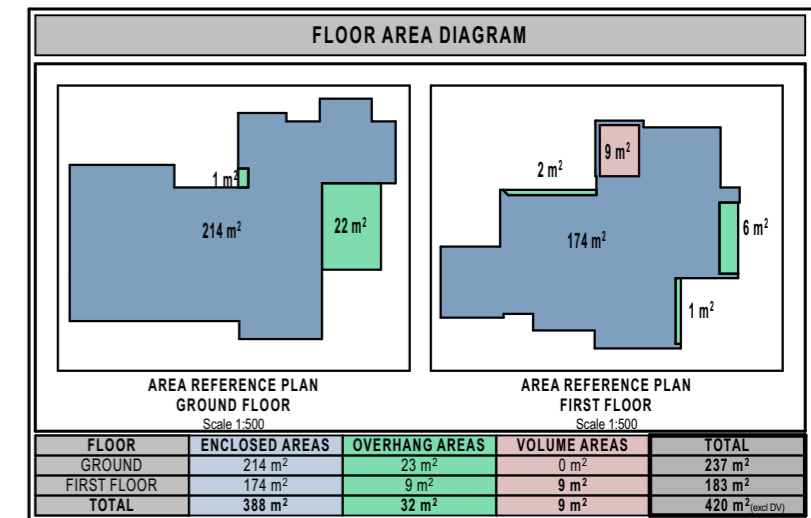
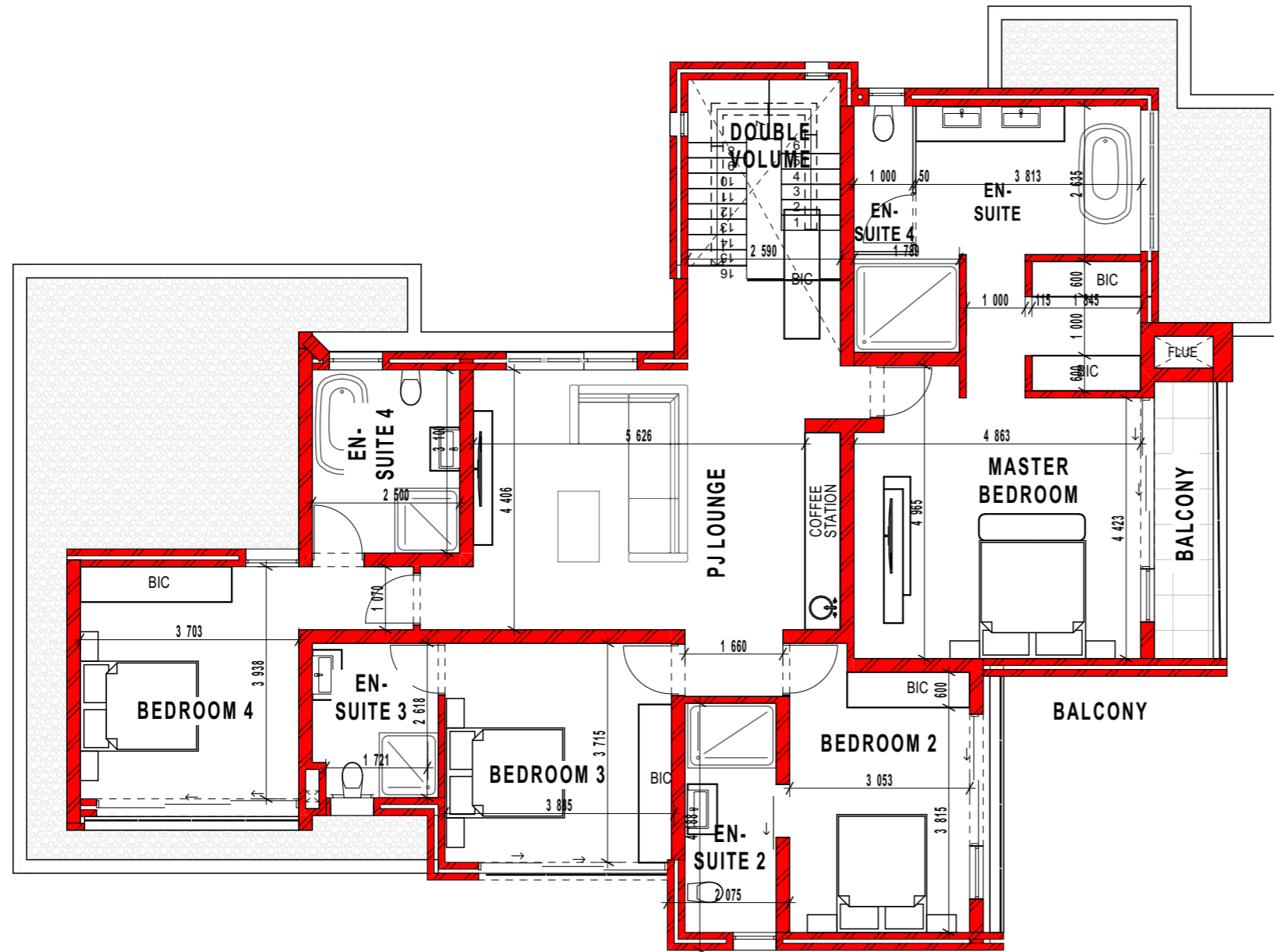


GROUND FLOOR
Scale 1:100



WILLOWS RESIDENTIAL DEVELOPMENT
UNIT TYPE B- PORTION 4

By having been supplied the content of this document, the viewer agrees that, by engaging to view and analyse this information, is bound to confidentiality and that all information presented (facts, opinions, propositions, opportunities etc.), contained in this document or with any other communications arising therefrom (the information), is strictly confidential and legally privileged. Unauthorised disclosure of and/or use of the information may result in civil and criminal liability. The information remains the intellectual property and copyright of the author/s, whether in a JV or any other capacity as presented. The viewer binds himself/herself not to disclose this information to any third party without explicit written consent from the author/s and should there be any furtherance of any of the information, opportunities or subject matter, then the author/s will be informed and their services will be utilized in the capacity presented




FIRST FLOOR
 Scale 1:100

WILLOWS RESIDENTIAL DEVELOPMENT
UNIT TYPE B- PORTION 4

By having been supplied the content of this document, the viewer agrees that, by engaging to view and analyse this information, is bound to confidentiality and that all information presented (facts, opinions, propositions, opportunities etc.), contained in this document or with any other communications arising therefrom (the information), is strictly confidential and legally privileged. Unauthorised disclosure of and/or use of the information may result in civil and criminal liability. The information remains the intellectual property and copyright of the author/s, whether in a JV or any other capacity as presented. The viewer binds himself/herself not to disclose this information to any third party without explicit written consent from the author/s and should there be any furtherance of any of the information, opportunities or subject matter, then the author/s will be informed and their services will be utilized in the capacity presented

REV A - 2024/10/23