






**Midrand, Halfway Gardens**  
R1,890,000  
4  | 2  | 2 



While every care has been taken in drawing up this brochure we cannot be held responsible for any errors or omissions. Katy Grobler (083 488 1114) - BETTERBOND

*Personal Touch* Professional Approach  
0840961111 | SALES | RENTALS | AUCTIONS | COMMERCIAL  
**FIRZT**

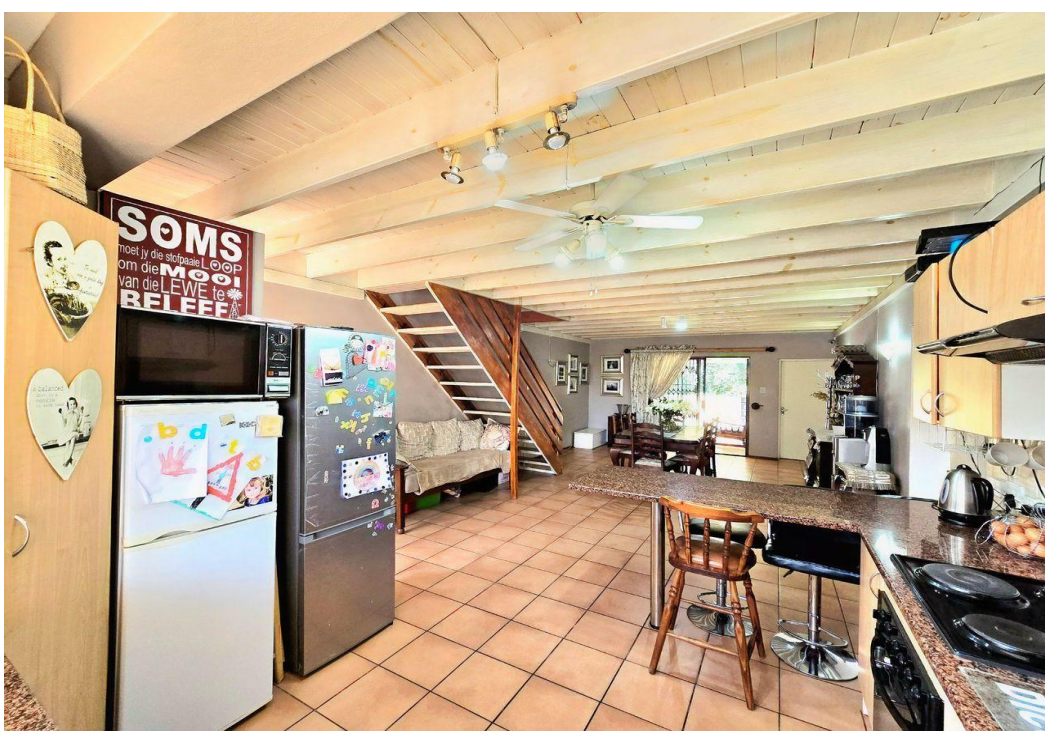




# Spacious Family Home with Solar Power and Private Garden

<b>Floor Size</b>	205m <sup>2</sup>	<b>Garages</b>	2	<b>Recep.Rooms</b>	2
<b>Land Size</b>	-	<b>Carports</b>	2	<b>Domestic Accom.</b>	-
<b>Bathrooms</b>	2	<b>Security</b>	Yes	<b>Rates</b>	R900
<b>Bedrooms</b>	4	<b>Pool</b>	No	<b>Levies</b>	R2,726

Discover this impeccably maintained 4-bedroom home, designed for comfort and sustainability. The heart of the home is an open-plan kitchen with space for two appliances and a double-door fridge, seamlessly flowing into the living and dining area. A sliding door opens to a covered patio, perfect for outdoor relaxation, looking out on a spacious, private garden equipped with a JoJo tank. The main level features three bedrooms with built-in cupboards, including a master bedroom with an ensuite shower, and a shared bathroom with a tub. Upstairs, you'll find a versatile office space, a separate lounge, and an additional bedroom that opens onto a serene, private, covered patio. With a full solar system, this home is both eco-friendly and energy-efficient. Don't miss the chance to own this beautiful property that perfectly balances style, functionality, and sustainability.



**Simone Van Deventer**

0825713777  
simone@firzt.co.za

Web Ref: RL19511