





**Johannesburg, Craighall Park**

R12,000 pm


2  | 2  |



While every care has been taken in drawing up this brochure we cannot be held responsible for any errors or omissions. Katy Grobler (083 488 1114) - BETTERBOND

*Personal Touch* Professional Approach

011 731 0300 | SALES | RENTALS | AUCTIONS | COMMERCIAL




# Renovated 2 Bed 2 Bath Apartment!

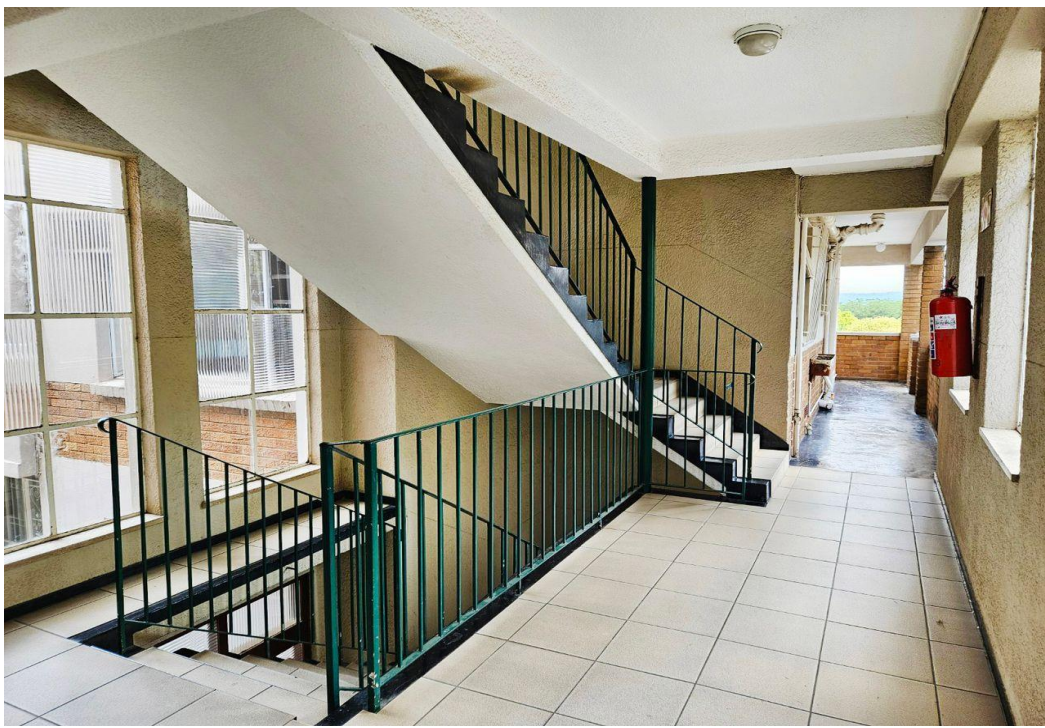
<b>Floor Size</b>	-	<b>Garages</b>	-	<b>Recep.Rooms</b>	2
<b>Land Size</b>	-	<b>Carports</b>	-	<b>Domestic Accom.</b>	-
<b>Bathrooms</b>	2	<b>Security</b>	No	<b>Rates</b>	-
<b>Bedrooms</b>	2	<b>Pool</b>	No	<b>Levies</b>	-

What a find! This first-floor unit in Creden Hill, 13 Clarence Avenue, Craighall Park, will be in high demand, so don't delay!

Situated opposite Craighall Park Spar and only a 30 second walk to Dolci Café, Impala Fruit and Flowers, and a family pharmacy amongst other shops.

The kitchen and 2 bathrooms (one with a bath, the other with a shower) are impeccably renovated. Furthermore, the kitchen has double space for a washing machine and dishwasher and has a gas stove (with municipal gas!) with an electric oven. Check out the photos to see the very unique internal kitchen cupboard designs, ensuring storage space is maximised with quick and easy access to all products.

Parquet flooring in excellent condition can be found throughout the combined lounge and dining area, as well as in both the well-sized bedrooms. Notice how bright the unit is in the photos, even with no lights on. (The prepaid meter had no funds)



**Lynn Ratner**  
083 775 6964  
lynn@firzt.co.za

Web Ref: RL18631