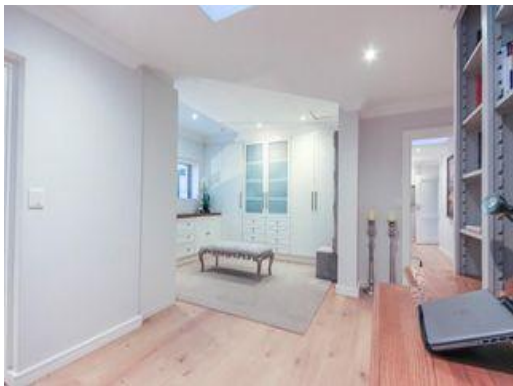





**Sandton, Inanda**  
 R7,950,000  
 3 🛏️ | 3.5 🚿 | 2 🚗



While every care has been taken in drawing up this brochure we cannot be held responsible for any errors or omissions. Katy Grobler (083 488 1114) - BETTERBOND

*Personal Touch* Professional Approach

011 731 0300 |  
 SALES | RENTALS | AUCTIONS | COMMERCIAL




# Beautifully Designed, Secure & Immaculate Simplex

|                   |                   |                 |     |                        |        |
|-------------------|-------------------|-----------------|-----|------------------------|--------|
| <b>Floor Size</b> | 350m <sup>2</sup> | <b>Garages</b>  | 2   | <b>Recep.Rooms</b>     | 2      |
| <b>Land Size</b>  | 543m <sup>2</sup> | <b>Carports</b> | -   | <b>Domestic Accom.</b> | -      |
| <b>Bathrooms</b>  | 3.5               | <b>Security</b> | Yes | <b>Rates</b>           | R3,517 |
| <b>Bedrooms</b>   | 3                 | <b>Pool</b>     | No  | <b>Levies</b>          | R2,250 |

This Simplex is located In The Inandas

Entrance Foyer

Lounge

Dining room with built-in drinks cabinet with wine rack

Kitchen with Smeg appliances, 5 ring gas hob, two ovens, breakfast nook, Morso style built-in fireplace & built-in window seating.

Scullery with laundry room

Guest toilet

Undercover entrainment area

3 Bedrooms all with built-in cupboards main with walk-in dressing room & Study

3 Bathrooms, all en-suite

2 x Garages

Off street parking

Special Features:

24 Hour Security



**Keith van Vollenhoven**

083 267 8475

keith@firzt.co.za

Web Ref: RL17627