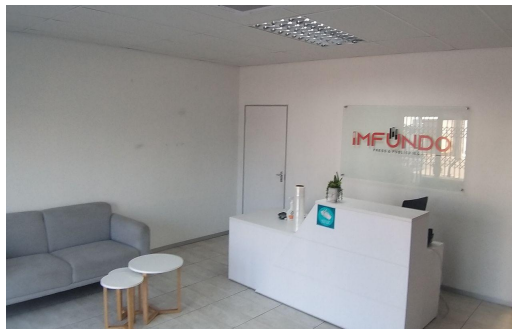
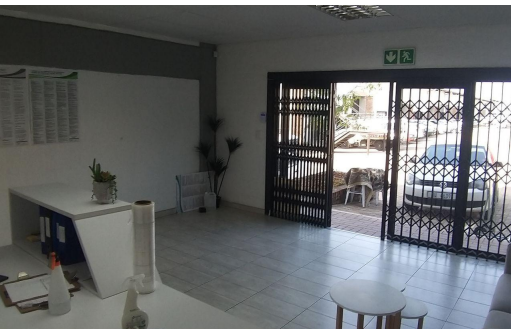




🚗 3
🏠 -



R100 per m²

35m² Warehouse To Let in Cornubia



| | | | |
|-------------------------|------------------|------------------------|-----|
| LAND SIZE | 35m ² | OPEN PARKINGS | 3 |
| FLOOR SIZE | 35m ² | POWER (3 PHASE) | Yes |
| BUILDING HEIGHT | 5m | POWER (AMPS) | 60A |
| TITLE | Sectional Title | | |
| ZONING | Industrial | | |
| SECURITY | Yes | | |
| AIR CONDITIONING | Yes | | |



Daniel Martins
0719718077
daniel@dealcore.co.za