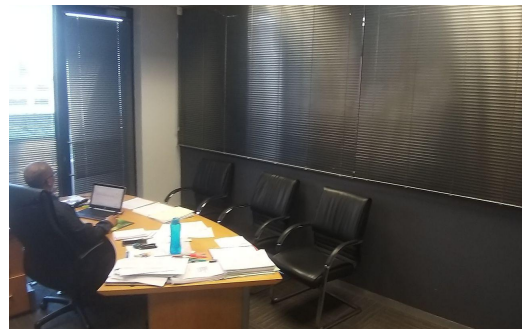
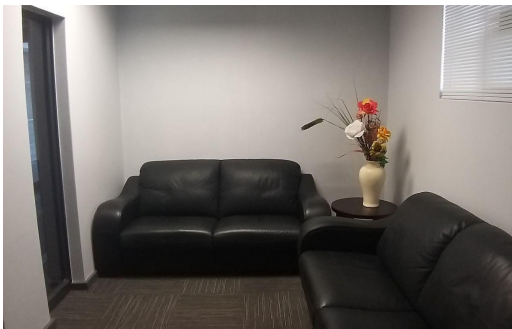
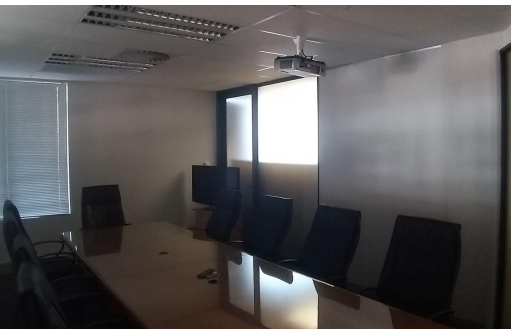




Car icon -
House icon 11



R6,150,000

214m² Office For Sale in Umhlanga Ridge



LAND SIZE 214m²
FLOOR SIZE 214m²
TITLE Sectional Title
ZONING Commercial
SECURITY Yes
AIR CONDITIONING Yes

BASEMENT PARKINGS 11



Matthew O'Donoghue
0836019074
matthew@dealcore.co.za