

Expertise Built Through Generations of Trust



1 Bedroom Apartment Sold in Loevenstein

R690,000

NEW



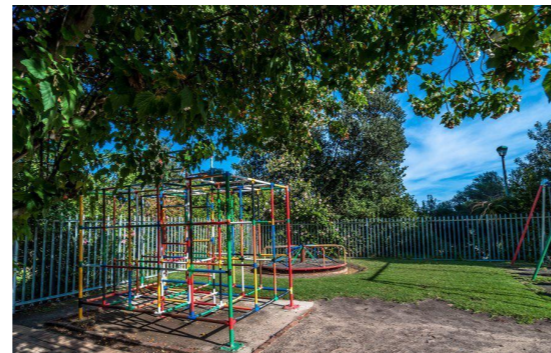
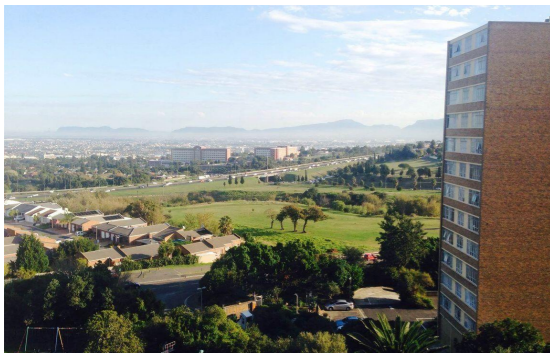
Table Mountain Sunset views!

Sole Mandate. Situated in the popular and meticulously managed Tafelsee complex, residents enjoy access to a sparkling pool, 24-hour on-site security, a playground, and a braai area for entertaining. Upon entering this lovely 2-bedroom apartment, the stunning parquet flooring sets a sophisticated tone. Notably, the apartment features an advanced inverter system with 8 batteries, ensuring an uninterrupted power supply for ultimate convenience. The open-plan layout seamlessly connects the lounge with the kitchen, creating an inviting space for relaxation and entertainment. Large windows offer panoramic views of Table Mountain, bathing the lounge in natural light.



Lounges 1

Floor Size 43m²



**Anene
Botha**

072 538 2668

021 913 4662

anene.botha@seeff.com